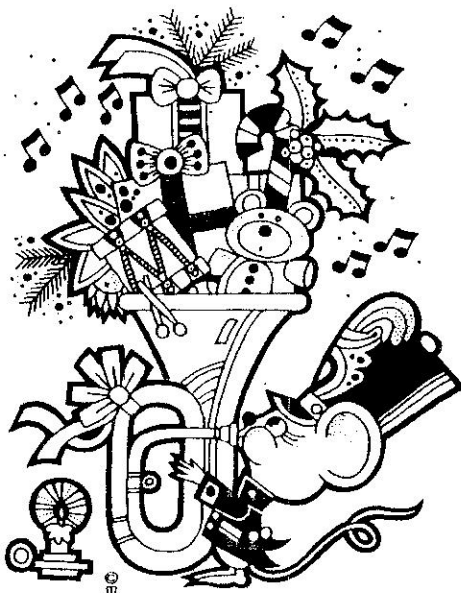


The READOUT

YEAR 11 NO. 12 DECEMBER, 1989

We Wish You A Merry
Christmas



Stanislaus Amateur Radio Association, Inc.
P.O. Box 4601 Modesto, Ca 95352

The READOUT is published monthly by the Stanislaus Amateur Radio Association. COPYRIGHT 1989 by the Stanislaus Amateur Radio Association, (SARA), Modesto, CA. All Rights Reserved. Permission is granted for reproduction in whole or in part provided that credit is given to **The READOUT** and to the authors of the reproduced material.

1989 SARA Officers

President Phil Hartz . . . WDOFFX
Vice President . . Jo Shaffer . . . N6SAH
Secretary Linda Franklin N6REB
Treasurer Steve Faries . . N6EKV

SARA VHF Net

Thursdays @ 8 p.m. (Except Holidays)
2 meters 145.39 MHz WD6EJF
220 Band 223.88 MHz WD6EJF

Contributions to **The READOUT** are always welcome and may be submitted to the editor by mail or via packet at WB6V BBS on 145.07 MHz. The deadline for articles is the 15th of the preceding month.

Editor

Bob Pinheiro, WA6ZLO
1221 Mist Flower Ct.
Modesto, CA. 95355

Advertising rates are available upon request from the Editor. SARA is an ARRL affiliated club and is affiliated with the City of Modesto and Stanislaus County RACES.

Next SARA Meeting

December 19, 1989

730 Pm

*County Administration
Building*

12 th and H Streets

Modesto, CA.

Lower Level Conference Room

We Make Copies BUDGET COPY CENTER

Your Authorized

Xerox Copy Center

**Fast turn-around- High Quality
Heavy Volume Orders**

Letterheads-Collating-Stapling

Folding -Business Cards

Open M-F 8 am to 530 pm

1321 J St. At 14th

FAX 529-6366

Downtown Modesto

529-5395

A Ham's Christmas

By Walker A. Tompkins, K8ATX

*Twas the Night before Christmas, and in the Ham shack
Was the warm glow of tubes in the transmitter rack
The logbook was brought up to date with great care
In case the FCC might someday be there.*

*XYL and harmonics were snug in their beds
(No Tennessee Indians to addle their heads)
I plugged in the mike and my new VFO
Getting all set for a nice QSO.
When from the relays there rose such a clatter
I yanked the big switch to see what was the matter.*

*Then up on the roof by the two-meter beam
There came QRM like a heterodyne scream:
"On Gonset, on Babcock; On Viking and Elmac!
On Ranger, on Collins! On Heathkit and Tentec
Blas to the grid and volts to the plate,
Just watch that S-meter while we all modulate!*

*As I turned on the rig and reached for a dial
From the antenna tuner Sarita slid with a smile.
An RF choke he held tight in his teeth
And coax encircling his head like a wreath.
A bundle of Hamgear he had flung on his back
Was that my name on a new power pack?*

*He had a stub nose like an egg insulator
And his cheeks glowed bright red like a hot oscillator.
He spoke not a word, but went straight to his work
Laying out all the gear, then turned with a jerk
And, laying a wavemeter alongside his nose
Said "Please QSL?" and up the feeders he rose.*

*He climbed up the dipole, to his team gave a whistle
And away they all flew like a jet-propelled missile.
But I heard his last signal from the ionosphere:*

"Seventy-three; Eight-eight! And a Merry Christmas to all!"

Driving Mexico At Night

Stopped and Searched 12 times Cops Carry Automatic Weapons

By **Leo Gonzalez**
Deputy Sheriff, Stanislaus Co.

Yes, there are many myths and misconceptions about travelling by car in Mexico. This may not alleviate your fears but it may be of some use if you do decide to wander South of the Border into "Mananaland."

I recently spent about a month along the central Pacific coast of Mexico. My vehicle, then a new Ford Bronco II, was stopped and/or searched about 12 times. My feeling was that they wanted to check out the vehicle itself because Fords are popular and four wheel drives with big tires project the macho image which my Mexican brothers are already afflicted with.

My first search was at Nogales, at the Arizona border. It was mostly visual. The visa has a series of boxes where you check off the label that most closely matches your occupation. If you are truthful and check *Law enforcement/Armed Services*, the Mexican Customs automatically assume that you have a weapon in your possession and that is an automatic felony in Mexico. They may confiscate your gun, arrest you and take your vehicle, your wife and your dog.

It doesn't matter how many police ID's you have. They shade the "law" to suit the situation. But for the most part, if you don't come off as a trouble-maker, you may only have your gun confiscated.

If you strike up a friendship with the local police chief, a box of quality US made ammunition goes a long way toward a more pleasant vacation. Especially if you're a rowdy seniorita-chasing, cantina closing type of guy.

The Border Officer took me aside and in a low voice he asked me if I was carrying my

**The remoteness of this
75 mile stretch of road
makes it a place to avoid,
even in daylight....**

"pistola." I do believe he would probably have only charged me a "fee" and let me keep it if I had it. However, I never carry a gun in Mexico. About 20 miles down the road, I noticed a car behind me a little too close and not passing when I slowed down. They would sound their horn, but I thought "why should I stop for two guys in an un-marked 'Stars & Hutch' type Ford sedan?"

Finally, they put a red light on the roof and I pulled to the side of the road. The driver approached wearing a pistol and clutching an AK-

Driving Mexico At Night

-47. His sidekick had some kind of automatic rifle, looked like it was Israeli. At this point, I was becoming more and more convinced that these guys were bandits. When I was asked for my driver's license, I made sure that they knew it was under the seat. I was told to get it out, slowly, as they watched intently. When they were satisfied I was the owner of the vehicle and on vacation, they spun their big-engine Ford around and roared off in a cloud of dust with no apology for such show of weaponry. They had only stated they were state undercover agents looking for a stolen white vehicle.

In my further contacts with different agencies, I was told that bootleggers and drug dealers had out-gunned the police so many times that the cops were allowed to carry as much firepower as practical.

DRIVING AT NIGHT.

You are a fool if you travel Mexico by night! The lack of fences allows an assortment of large animals and wild burros to wander the roads. There are big chuck holes, bridges out and detours, the pavement on many roads ends abruptly and there are no signs or markers us "gringos" can read. If you drive at night, you deserve what you get. Ignorance is indeed bliss.

My friend and I drove the toll freeway, Highway 1, into Cullacan, an area known for poppy fields, bandits and corrupt officials. The remoteness of this 75 mile stretch of road makes it the place to avoid, even in daylight. Armed troops at the Toll Sheds and frequent patrols still cannot stop the hold-ups and assaults that take place regularly on that road. Too bad I didn't learn this until my friend and I had travelled it, at

night, with just enough gas to make it to the next major town. Smart Mexicans take Toll Highway

**...you're a fool
to drive
in Mexico at
night!**

15 like everyone else, uninformed tourists set themselves up for tragedy. We were lucky!

Leaving the City of Cullacan, I noticed a black and white Highway Patrol car (old CHP unit) sitting at an intersection and they flashed their spotlight at me. This, I was to learn, always means to pull over. But for now it meant nothing, so off through the cool dark countryside I sped with the stars shining so bright. Well, within seconds, in the rear view mirror, here came the bright lights with flashes of blue and red. I could feel anger coming on, expecting some kind of shake-down for some unknown reason.

After two days and nights of driving, I didn't need this harassment. Both officers were polite. The one with the shotgun inspected my ID, while his partner, the one with the MAC-10 machine gun, questioned me about how I came to possess this nice vehicle with US plates. Very few people, even trucks and buses, travel late at night. Any movement, especially a new truck with US plates, this late and this far south, will be stopped. The two officers politely refused my offer to buy them coffee. They did warn me of

See Driving in Mexico, Page 14

Members Help Earthquake Recovery

Provide Red Cross Communications

By, LeRoy, NV6S

During the week following the disastrous earthquake in the Bay Area, many Amateurs were called upon to provide communications for the relief operations. I spent one entire day at the Red Cross office in Watsonville where all went well.

The Amateur operation was excellent, well ran, efficient and needed. I was not really impressed with the operation of the Red Cross although they were severely understaffed for the situation. I handled about four pages of traffic during the day to and from various shelters and the Red Cross main office in Santa Cruz. All material had to be ordered through Santa Cruz although the original requests were often sent to Watsonville.

It rained from about 8:00 A.M. until about 1:00 P.M. and we had an aftershock shortly after lunch which was noticeable although not strong enough to be threatening.

From the numbers that I received there must

be about 1000 people out of homes in the Watsonville area and many of them were living in tents at the shelter areas. Many of them were low income families that are totally dependent on the Red Cross and the shelters. For many I'm sure it was a long term situation since housing, especially in the price range needed, simply no longer existed in that area.

It was also interesting to see the damage. Across the street from the building where I worked was one building that had been knocked off its foundation while all the buildings around appeared to have minimal damage.

It will take a long time to get that area back to normal and it will take a lot of money and outside help to do it.

Ed-Note: Steve, N6EKV and Tom, N6LSA also donated their time and talents working the Red Cross Amateur stations in Watsonville.

....This & That

- ☐ Postal Rates are going up again possibly even before the end of 1990 and for sure by April 1991. The increase could be larger than the April 1988 increase of 15%. Expect a hike of at least a nickel on first class mail and 20% on third class mail.
- ☐ Voice Triggered credit cards that respond only to their owner's voice have been invented by scientists at Bell Communications Research. An owner could put a card in an ATM (Automatic Teller

Machine) equipped with a microphone, then speak a password instead of punching in a four character identification code. The system could also work the telephone calling cards, consumer credit cards and doors that use card locks. The system is based on the premise that like finger prints, no two voices are alike. It compares spoken words with a voice pattern stored digitally on the card. Bell Research has patented the system and plans to license it to other companies.

Generator Owners Beware Law Mandates Notification

Do you have your own generator to use if the power to your house goes out? If you do, the law requires you to notify your local power company and make sure that it is installed properly. The law also requires you to tell the power company if you own, rent or lease the generator. Here's why!

All of sudden the power goes out. So, you go out and fire up the generator, or it kicks in automatically. In the meantime the power company has crews out trying to repair the problem. What you and the power company may not know, is that you have hooked up your generator **WRONG** and you are sending power not only to your home, but back down the power company's line.

This could create a life-threatening situation for a lineman who thinks the power is off and the line is safe to touch. **He could be severely burned or even electrocuted.** It's easy to avoid this from happening and comply with the law.

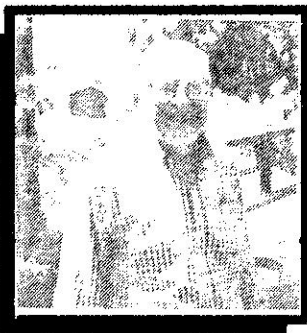
Before you hook up a generator, go to the main service box and disconnect your home's

electric system by flipping the main switch to the "off" or "open" position. Now you can safely hookup the generator and start it. If your generator is permanently connected to your electrical system, the law requires that you have a double-throw switch. Connected properly, this switch will

**.....He could be severely
burned or even
electrocuted.**

separate your generator from the power company line.

If you're not sure what kind of switch you have, call an electrician for advice. Whether you have a portable or permanent generator, it's required that you register it with the power company. Do it today. It's the law, and you could save a life.



Meet SARA Member

**Max Campbell
KA6CUJ**

Murphys, CA.

Earthquake Country

Richter Scale

Intensity Vs. Destruction

When earthquakes occur the first two questions that come to one's mind after the shaking stops is, (assuming that you are not in the center of it) Where was it centered and how big was it? Seismologists use sophisticated equipment to answer both questions. To answer the question of how big it was, they calculate the strength by using the Richter Scale.

Charles F. Richter, a seismologist at Cal-Tech in Pasadena devised the earthquake scale in 1935 which is still in use today. The scale is a logarithmic measurement of the amplitude and calculated by seismographs and corrected for distance from the quake's epicenter. Thus the Richter scale is an absolute measurement of magnitude, independent of the observing location.

A 5.3 magnitude is about 60 times the energy of a 4.3 magnitude. Because intensity is so dependent of the ground and structural conditions on a particular area, the magnitude and intensity of a quake may vary considerably at two points that are equally distant from the epicenter.

For this reason, it is difficult to equate mag-

nitude with estimated intensity. However, the table box provides a general estimate of the relationships.

Of course, the actual damage that may occur will depend on the location of the epicenter in

<i>(Magnitude)</i>	<i>Effects (Intensity)</i>
1	. . Observed only on instruments
2	. . Barely felt near the epicenter
4.5	. Can be felt some 20 miles away and cause slight damage
6+	Moderately destructive
7+	. Major earthquake
8 +	. Great earthquake ..large scale destruction

relation to population density.

It seems enough to say that an earthquake is one of the most irresistible forces on earth and it is impossible to attach any comparable numerical value on a force that can cause "solid" earth to shift 20 feet.

Computer Programming

January SARA Meeting

The January meeting of SARA will have a special program presented by new SARA member, Bill Bailey, WB9CYB. Bill is a professional software programmer and will be demonstrating how it's all done. In addition, Bill is writing a software program for the club which can be used with IBM and compatible computers. The program will be a logging type program that can be used in conjunction with Amateur Radio. Bill will donate the rights to the program to the club which will then offer it for sale as a means of raising funds. Bill is a senior program analyst with Gallo Winery in Modesto. Don't miss this program!

Thank You !

A big THANK YOU to all our members who helped bail out the depleted treasury with their donations. As a result, we are ending the year in a much improved position. Your continued support is greatly appreciated.

Fewest Hams

Which state in the union has the fewest number of licensed hams? Wyoming with only 1,019. Here are the ten states with the fewest number of Amateur operators. Wyoming 1,019, Delaware 1,097, South Dakota 1,165, North Dakota 1,149, Vermont 1,269, Montana 1,764, Rhode Island 1,833, Alaska 2,091, Idaho 2,205 and Nevada 2,300.

FBI Firepower

New Automatics

The authority for FBI agents to carry firearms was first granted in 1934 and for the past 55 years agents have carried a .38 caliber revolver as the standard department issue. But that's about to change. The Director has approved replacing the .38's with 10 mm automatics. That's right 10 mm, not 9 mm or .45 caliber automatics. The FBI decided on the 10 mm, which will be special made for them, after extensive tests. The FBI test program was designed to evaluate bullet penetration and wound size and the results showed the best performing round within the FBI's parameters test protocol was the 10 mm.

-The FBI Magazine

Digital Radio News

New Feature

In January a new feature will debut, "Digital Radio News" written by Ed Rodrigues, KB6DFN. Included will be stories ranging from computers to science and a variety of other articles. Here's a partial list.

- Eatable Radio Transmitter
- Computer Viruses, More Bark than Byte
- High Energy-Flexible Magnet
- New way to package chips
- Putting super conductors to work
- Hot Fusion

Editor's Notes

By Bob Pinheiro, WA6ZLO

Our condolences to SARA member Dan Tonini, WA6KDC, and his family, upon the death of his wife Doris Inez. Mrs. Tonini succumbed on November 6th, 1989 after a long illness. She was 73.

Our membership stands now at 170 with the addition of three new members this past month. Welcome to Marc Willis, N6WCW, of Manteca. Marc is a General and works in Sunnyvale where he is an equipment line maintenance electronic technician. KC6BAX, R. Stephen Campbell is a Novice and also lives in Manteca. WB9CYB, Bill Bailey, is an Advanced class who lives in Modesto. Bill is a Senior Programmer/Analyst at Gallo Winery who lured him to Modesto from his previous home in Wisconsin. Bill was first licensed in 1961.

According to our Club Station Site chairman, Hart, N6TIV, the club has been offered a site at Downey High School. Prez Phil, WD0FFX and Hart met with Downey officials who were enthused with the possibility of establishing a club station at the school which might foster interest in the student body for a school radio club. The school has offered us the room once occupied by the now defunct school FM station. The room is rather small but it is quite secure with a working burglar alarm. The original 75 foot Rohn tower that supported the FM station antenna is still in place along with the one inch hardline

that fed the FM antenna included. Club station committee members will be considering all the possibilities including the original offer from the Teel Middle School in Empire.

For you DX'ers, Lloyd and Iris Colvin, W6KG and W6QL, have left on an around the world YASME Dx-pedition. They left October 30th and do not expect to return until April of next year. They hope to be on the air on all bands, SSB and CW from Niger, Burkimo Faso, Bahrain, New Zealand and Tahiti. They will stay in each country about three to four weeks.

The FCC announced effective January 1, 1990 the maximum allowable reimbursement fee for Amateur operator license exams will be \$4.96. The increase is based on a 4.3% increase in the Consumer Price Index. Presumably, most VE's will be charging \$4.95.

According to JARL (Japan Amateur Radio League) News, there are 5,107,175 various types of radio stations in Japan. 2,390 are conventional (same as our CB) stations. 950,000 are Amateur Stations.

Apparently Radio Caroline, the pirate radio station that operated from a ship in international waters in the North Sea for many years has been shut down by Dutch, French, Belgian and British authorities. The popular unlicensed English rock 'n' roll station operated on 6215 KHz before being

See Editor's Notes Page 17

EARTHQUAKE

By Lew Jenkins, N6VV, Pleasant Hills, CA.

Tuesday the 17th of October - Like everyone else around here, I spent a considerable amount of time on that Tuesday trying to get tickets to the World Series but by 3:00 PM had decided that I was going to have to content myself with watching the series on television that evening. At about 4:30 pm, me and most of the rest of the office started to migrate towards the exits in order to make it home in time for the TV coverage of the series which was scheduled to start at 5:00 PM local time.

Incidentally, everyone around here is convinced that the World Series saved literally hundreds of lives at places like the Cypress Structure on Highway 880 since many thousands of people around the bay, were doing exactly what we were doing and trying to make it home before 5:00 PM to watch the game.

I have driven the 880 stretch that collapsed many times and at 5:00 PM during the height of rush hour there would normally have been hundreds of cars jammed into that 12 block section which collapsed. I work in Concord only 3 miles from my home in Pleasant Hill so arrived home about 4:45 pm and walked out to the shack located about 100 feet behind my house, to "check the BBS", as is my usual habit when coming home.

I was browsing through the messages going and coming on the system, when suddenly shortly after 5:00 PM my chair started to bounce up

and down. At first I thought it was just one of the many little earthquakes that any native Californian has grown accustomed to riding out with little concern. Suddenly the motion began to get much more violent and things began flying around the shack. A large bookcase to my left fell over and splilted hundreds of books and QST's across the floor. Loud noises from stuff falling over in my storage area behind the shack convinced me it was time to get out of the building. I dashed for the door and stood just outside the shack looking up at my tower. My main concern at this moment was the tower immediately over my head.

The Rohn 45 tower had a 6 element KLM 20M beam and a 4 element KLM 40M beam at 85 feet. The Phillistrand guy wires were alternately snapping and going slack and the beams were jiggling wildly. I decided it was probably prudent to try to get at least 85 feet away from the immediate area. Dashing through my back yard to scoop up my 8 year old son we went to the front yard and watched the trees and telephone poles waving wildly in the air. I live on a small knoll and have an excellent view out across the Diablo Valley.

For another 10 seconds we stood watching the eerie sight as the whole valley jiggled and shook. For about 30 seconds we stood there afraid to move. After checking with the rest of the family to see that they were all safe, I ran back to

See Quake Page 12

Quake

(From Page 11)

afraid to move. After checking with the rest of the family to see that they were all safe, I ran back to shack to see if it was OK. The power was off and sirens were already screaming all over the area.

My neighbors were all out in the streets and some people had their car radios on listening to the first reports. The first serious damage reports were coming in and I heard that part of the Bay Bridge had collapsed. My first thought was power. I got out my generator and started setting up on the road next to my shack. My neighbors came over and helped me with the gasoline.

I started the generator and let it run for a while to settle down. I got out my hand held and began to monitor the 2M repeater in our area. There was a lot of conversation on the air as the hams began to check in. Without hearing any real news reports I began to assume that the worst areas were San Francisco and particularly the Santa Cruz and Gilroy areas. It turned out that I was right.

Listening to the local repeaters into the Santa Cruz area it became apparent that the voice circuits were a zoo and that if any H&W traffic was going to make it into that area it was going to have to be on packet. The surviving repeaters were all tied up with tactical information and most of the net control stations did not want to hear about Health and Welfare traffic. Actual fights broke out on some of the repeaters over the handling of

H&W traffic and I was very pleased when I started to hear people on the repeaters tell people "PUT IT ON PACKET".

From my own experience I can tell you that phone service into the 408 area code was very spotty and some areas in the South-bay were not available. The 415 area code was not bad after about 12 hours and was returning within 24 to many areas. One important lesson learned here in the SF area is that packet turned out to be the most efficient means of delivering H&W traffic.

Packet is wonderfully adapted to handling very high volumes of Health and Welfare traffic during emergencies, but probably shouldn't be used for tactical information handling. Voice circuits are better and the packet channels get jammed up with H&W anyway.

In summary I think that the San Francisco Earthquake was the first great test for this new technology which we call packet and although I'm sure we will be able to find some faults, in general packet performed wonderfully under what at times seemed like an impossible situation.

P.S. An interesting sidebar. All of these thousand of messages that were delivered were transmitted on 220.90 MHz. I can only hope that UPS will be able to utilize that frequency as effectively as we hams did during the Quake of '89.

Driving Mexico At Night

Continued from Page 14

Mexico so you tend to take advantage by increasing your speed. An ambulance went by, with lights flashing, at about 65 mph. Allowing about 150 yards distance, I kept pace thinking the speed limit was about 65. I noticed a black and white cruising in the opposite direction but thought nothing of it. Within seconds, they were in the rear view mirror, lights flashing.

Again, was it my new truck or was I speeding enough to warrant being stopped? The officer with the machine gun informed me of the proper speed limit and said we should follow him to the local courthouse. I had visions of a \$50.00 fine. After some further explanation at the courthouse, they allowed us to go on our way.

Another time on a highway going through a jungle in the middle of the night (again?), I saw a flash of light. After a while you become aware that this is probably the army and you better stop. You, of course, hope it is indeed the army this time. It felt strange. We were ordered to turn off all of our lights and exit the vehicle. I really thought these guys were bandits dressed as federal troops and could almost feel the hot lead

piercing my back as I stepped out. As your eyes get accustomed to the darkness you can just make out the face behind those big automatic rifles angled slightly overhead. At this point you feel a rush of relief as you realize that it is the real army on official business.

None of this deters me in the slightest from returning to my homeland. This is not intended to make you up-tight about travelling in Mexico

**'sunny beaches
warm senoritas,
cheap tequila
and all night discos.'**

either. Just don't travel at night.

Remember, great food which is cheap, laid back living, warm sunny beaches, friendly senoritas, cheap tequila and all night discos are much more than you'll find at a Taco Bell! But remember, don't drink the water!

*-Thanks DSA NewsLine
Stanislaus Co. Sheriff's Dept.*

Contributions to The READOUT can be made through my Packet Mailbox on the WB6V-2 BBS at Ceres. Column width and length are not critical. I download all contributions into the word processor and get them ready for the newsletter. Frequency is 145.07. All contributions are welcome and carefully considered.

SARA November Minutes

By Linda Franklin, N6REB , Seceretary

The November 21, 1989 meeting was called to order at 7:30 pm by President Phil, WD0FFX. Introductions were made by 19 members and guests. A motion was made to accept the minutes as printed in The READOUT, the motion was seconded and carried.

Treasurer Steve, N6EKV reported that currently all bills are paid and some 1990 dues have been paid. The \$60 yearly bulk mail permit and \$100 for monthly mailing fees has been paid which will carry over into March 1990. The general account stands at \$434.75 and that includes \$432 from the voluntary assessments that have been received to date.

Repeater maintenance expenses to date for 1989 total.... \$385.12. This does not include the \$876.71 for the new repeater building. Liability Insurance was \$612, Repeater Equipment Insurance was \$111.25. Long distance phone calls run about \$2.03 a month. The Fund Raiser account totals \$45.11, the Education account totals \$580.01. Steve, N6EKV, is looking into getting a safe deposit box at no charge so there will be a safe place to store all of SARA's important papers for easy access when necessary. A motion was made to accept the Treasures report as given. It was seconded and carried. It was discussed as a goal for next year, to hold fund raiser events to raise monies to purchase all new repeater equipment. Our present our equipment is aging rapidly. Several ideas and suggestions were

presented, including an auction of ham gear and another raffle of a handgun which was a previous successful fund raiser for the club.

A break was taken at 8:35 pm and the meeting resumed at 8:50. The raffle for the door prizes was held and KJ6GE held the lucky tickets for a log book and a portable am-fm radio which he donated back to the club for the next raffle. N6EKV got a VIP pass to Shakey's Pizza parlor.

Hart, N6TIV reported the Teal School site for the club station fell through and possibilities of locating it at the Downey High Schools old Downey Knights FM radio room were favorable. KJ6GE made a motion assuming Downey approves the set up of the club station, that the club vote to accept that site. Al, N6SAE seconded the motion and it carried.

N6EKV mentioned since illegal interference on the repeater has been taking place recently, maybe several members could acquire directional finding equipment to help pinpoint the source. He also suggested the club set up a schedule to turn off the repeater and use the backup to periodical see if it will work reliably. WD0FFX suggested that the club also hold Emergency Communications drills periodically.

Bob, WA6ZLO suggested that in the light of anticipated increases in postal rates and printing of The READOUT, that the dues be increased \$1 per member for the year 1990. Oliver, KJ6YZ

See Minutes on Page 17

Minutes

From Page 16

moved and Tom, N6LSA seconded the motion and it carried. Candidates for club officers in 1990 are, President Phil, WD0FFX, Vice President, Oliver, KJ6YZ, Treasurer Al, N6SAE and Secretary Linda, N6REB. It was hoped more candidates would be available for these offices at the December meeting when the elections are held. Also a get-together with refreshments will be held after the December meeting. All members are asked to attend and bring cookies and other goodies, the club will furnish the drinks. The meeting was adjourned at 9:50. Respectfully submitted by Secretary, N6REB.

Editor's Notes

From Page 10

boarded by authorities. Under maritime law, authorities do not normally have the right to board ships in international waters, but did so on a legal technicality and shut the station down. It seems the technicality was that the ship was not flying a flag and was therefore considered stateless. In a late report, however, I understand that it's back on the air. The FCC is just about to run out of N6--- calls and when they do, in about 6 months, they plan to issue group (d) Novice calls (2x3's) to Technicians and Generals. Under the plan you would not be able to apply for a different call until you upgraded to Advanced or Extra. Have a happy holiday. 73, Bob.

No License Fees

Amateur license fees have been deleted from the budget reconciliation legislation now under consideration in congress. The conference committee report, released November 21, states that the conferees recognize that Amateur licensees do not operate for profit and can play an important public safety role in time of disaster or emergency. There is little chance of the fees being reintroduced on the floor of either House of Congress as the legislation goes forward from here. ARRL congratulates all those who joined us in this effort.

Foothills Swap Meet Starting In March

The Perham Foundation is again sponsoring the Foothill College Flea Markets the **SECOND** Saturday of each month starting in March, 1989 and running thru September, 1989. Cost is \$7.50 per two spaces for sellers and buyers are free. Starting times vary with the rising of the sun so get there early for the best bargains! Foothill College is located in Los Altos Hills at the El Monte Exit of 280. Talk-in is on 145.27/R.

**1990 Dues Are Due
January 1, 1990
Please Send In Your Check
Or Money Order Today.**

SARA Technical Report

Murphy Rides to the Mountain

By, LeRoy, NV6S

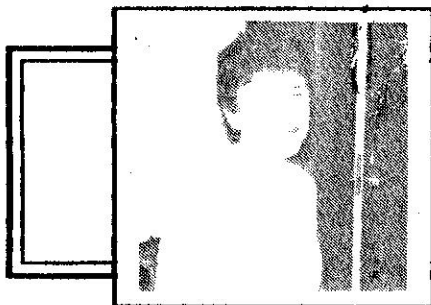
On Saturday Nov. 11, Ed, WB6V and I went to the hill top to make a few minor adjustments to the two meter repeater. I also wanted to find and solve the problem with the repeater getting very noisy while on backup power. I managed to increase the PI level on the 220 up link and I hope that will reduce the problem with dropping out. I decreased the level of the PI on the two meter output as it seemed to have increased on its own. I found the source of the noise on the battery backup and resolved that problem.

Ed and I headed for home but just as we were getting into Ceres the courtesy tone died after changing pitch. A little later the repeater developed a severe hum. I headed back to the hill. I met Phil, WDOFFX at the bottom of the hill and we headed for the hill top.

All of the active components in the tone circuit were burned out. I replaced those components and then we noticed a noise on the 220

uplink. I installed a couple ferrite beads and a bypass capacitor to solve that problem. Phil and I started down the hill when the main repeater started acting up. We returned to the site and found the voltage regulator circuit was losing regulation and apparently the voltage was increasing as the temperature increased. We installed a new 723 chip in the regulator which solved the problem.

Phil and I arrived home at about 2:30 AM on Sunday morning. I doubt that Bonnie who was home with the flu was real happy with Phil and I'm certain that my better half was not real pleased. I think the women behind the scenes who are very understanding when we spend many hours on the hill need a lot of thanks for putting up with our midnight excursions. I thank those who have accompanied me on the trips to repair equipment. 73 and CUL. De, LeRoy via Packet Radio.



**Meet SARA Member
Bonnie Hartz, N6PDW
Modesto, CA.**

VE News

By Chet Jensen, W6XK

Modesto exam sessions are coming soon...The dates are December 7 and December 9, 1989. Please let me know if you will be available on either (or both) dates. The Thursday session starts at 6:30 pm and the Saturday session starts at 9:00 am. at the Chrysler Elementary School, 2818 conant, Modesto, Ca. Send me a note on WB6V-2 or phone 883-2968.

Also, we have discussed the possibility of changing our examination schedule. The Saturday session does not seem to be as needed as in prior years. We may want to cut back to Thursdays only.

Phil, WDOFFX, has also suggested that we hold Novice/Technician only tests so that Advanced class VE's have an opportunity to test. Perhaps that could be scheduled on the Saturday following our Thursday exams. We need to set a schedule as soon as possible for 1990.

Finally, I am recommending that our 12/7 and 12/9 sessions be conducted through ARRL/VEC. We tested in Merced using ARRL/VEC and the process ran very smoothly. There have been some major changes in the League's program (for the better). I would like to "try them out again". 73

*1990 Dues Are due
January 1, 1990
Send Your Check & Renewal
Form To The Club
P.O. Box Today. Thanks!*

Solder Wick Trick

By John, VE3AMZ

As one who has been using solder wick for the last 15 years or so....I have had trouble getting an I.C. or similar device off a board using solder wick. As per the instructions, I had been laying the wick flat beside the f... and fiddling with it until it was clear of solder.

However, I have learned there is a better way. Put the wick vertical to the hole and use a hot fine tip iron and watch the hole clean out! You may need to clip off 1/4 inch of wick after each try but it works like a charm. It seems that the fine strands on the end of the wick pick up the solder much better than the flat braid portion of the wick. Try it...You'll like it!

Via RaRaRag, Rochester, NY ARA

Moving Sale

Cushcraft AB-5 beam...\$120
Ringo 2 meter vertical...\$20
Ringo 10 meter vertical...\$20
2 20ft t.v. masts...\$10 ea
1 30 ft t.v. mast...\$15
Clegg 12 volt Power Supply...\$35
Six & two meter SWR Bridge...\$10
Kenwood 820 with LCD
Frequency Display...\$375.00

Misc connectors & Coax.
Call Vorus Stillwell, WA6LJB, 527-3683

CALENDAR

Dec. 7, 1989.....	V.E. Tests in Modesto	700 p.m.
.....	Chrysler School	
Dec. 9, 1989.....	V.E. Tests in Modesto	900 a.m.
Dec. 19, 1989.....	SARA Monthly Meeting	730 p.m.
Jan. 16, 1990	SARA Monthly Meeting	730 p.m.
Feb. 20, 1990	SARA Monthly Meeting	730 p.m.
Mar. 20, 1990	SARA Monthly Meeting	730 p.m.
April 17, 1990.....	SARA Monthly Meeting	730 p.m.
May 15, 1990.....	SARA Monthly Meeting	730 p.m.
June 19, 1990	SARA Monthly Meeting	730 p.m.
June 23-24, 1990	1990 Field Day	24 Hrs.

SARA meets the third Tuesday of each month (except holidays) at the Stanislaus County Administration Building at 12th and H streets in downtown Modesto. The meetings are held in the lower-level conference room starting at 730 p.m. Visitors and interested parties are welcome.

Stanislaus Amateur Radio Association
P.O. Box 4601
Modesto, CA. 95352

Bulk Rate
U.S. Postage
PAID
Permit 5
Modesto, CA.

Address Correction Requested