



The READOUT

YEAR 10 NUMBER 12

DECEMBER, 1987



May every happiness be yours
at this Holiday Season
and throughout the New Year.

Stanislaus Amateur Radio Association, Inc.
P.O. Box 4601 Modesto, Ca 95352

...THE READOUT FACTS...

READOUT is the official publication of the Stanislaus Amateur Radio Association Inc. "SARA" P.O. Box 4681, Modesto, CA. 95352. Entered as third class mail at the U.S. Post Office Modesto, CA. 95352. Contributions to READOUT are always welcome and may be submitted to the editor, Bob Pinheiro, W46ZLO at 1221 Mist Flower Ct. Modesto, CA. 95355. SARA owns and operates two F.M. repeaters. 145.39 MHz (-) located on Mt. Oso, 22 miles SW of Modesto at an elevation of 3,370 feet. Our 220 MHz repeater operated on 223.68 MHz (-) and is also located on Mt. Oso at an elevation of 3,500 feet. Both repeaters are equipped with an autopatch for the use of SARA members. SARA owns and operates a Packet Digipeater also located on Mt. Oso at 3,500 feet. Frequency is 145.01 MHz. SARA conducts an informational net on both repeaters each Thursday evening at 800 pm with the exception of holidays. SARA meets the third Tuesday of each month at the Stanislaus County Administration building at the corner of 12th and H streets in downtown Modesto. Meetings begin at 730 pm. SARA is incorporated in the State of California, is an affiliated club of the American Radio Relay League (ARRL) and Stanislaus County RACES. Dues are \$15.00 per annum and \$7.50 for students up to sophomores in college. Dues are pro-rated for newly joining members from the date they join. ARRL memberships and QST renewals may be made through the club with a \$2.00 commission retained by SARA.

PRESIDENT

Denny Dugal.....W6GP.....571-9046

VICE PRESIDENT

Bud Pelletier.....N6OCV.....823-0877

SECRETARY

Laverne Landeros....KB6EDF.....578-5554

TREASURER

Bob Vreugdenhil.....N6DCS.....522-6127

HAPPENINGS

Next SARA Meeting

PROGRAM

(Rescheduled from Nov.)

" THE NEW

WORLD OF AMATEUR RADIO"

(Video.)

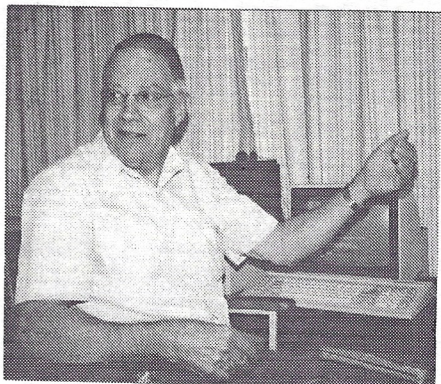
ELECTION OF 1988 OFFICERS

730 pm

BUDGET COPY CENTER

1325 J STREET
MODESTO, CA 95354
TELEPHONE 529-5395

MEET SARA MEMBER BURT, W6FGC

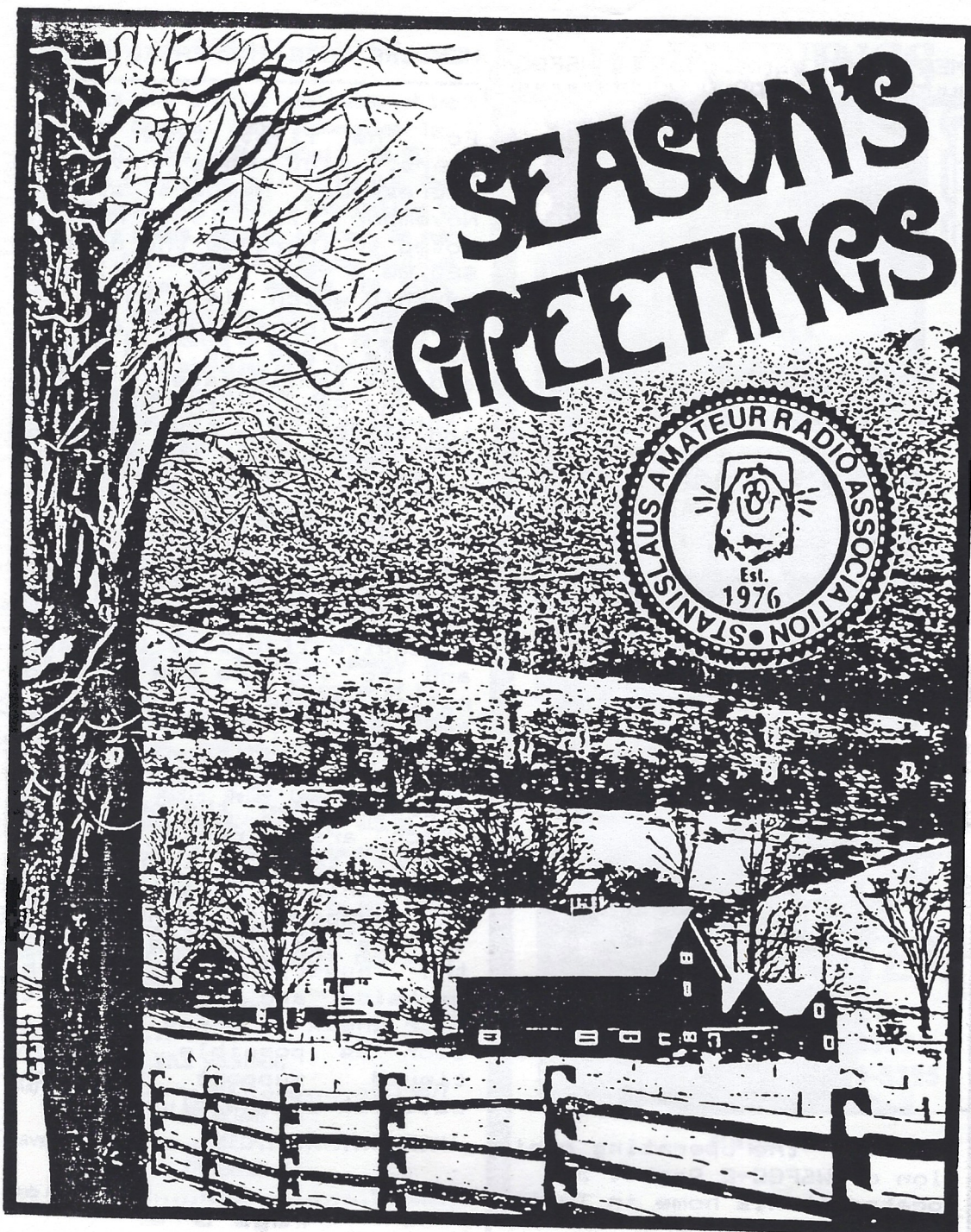


Burt at the operating position of W6FGC-2 Packet BBS located at his home in Twain Harte.

MEMBERS VOTE INCREASED DUES

For the first time in 11 years, club dues have been increased. Members at the November 17, 1987 meeting voted to increase the dues to \$20.00 a year for full membership which is a \$5.00 increase. The student and Associate rate is now \$10.00 and the family rate is \$20.00 for the head of the household and \$10.00 for each additional member up to 4. The maximum for a family living in the same household is \$40.00 per year. The increase is needed to cover increased expenses. Primarily, the money is needed to reacquire liability insurance and to replace the deteriorating building housing the two meter repeater on Mt. Oso. The additional revenue will be used to cover increased expenses for the newsletter which are directly proportional to the increase in membership. Please fill out the membership renewal form in this edition and complete the questionnaire on the backside and return it with your check or money order as soon as possible. The continued support is the catalyst of the club.

SEASON'S GREETINGS



On The Agenda.

October 20, 1987 Meeting

The October 20, 1987 meeting of SARA was called to order at 737 pm by Denny, WG6P. Introductions of 44 members and guests followed. The minutes of the previous meeting were accepted as read. The frequency of the weekly get together of SARA members on 75 meters has been changed to 3.880 per Phil, WD0FFX. WG6P reported that he and N6OCS sent Lori, N6JTD, flowers in appreciation for her efforts on the dinner-dance. The Treasurers report was given by the Secretary for the Treasurer who was unable to attend. Beginning balance, \$1,324.99. Paid out, \$43.88 for printing the newsletter for two months. Expenses for the dinner-dance \$1,140.00 to Oasis Restaurant and the dance band. \$18.96 for the phone bill. Deposits of \$900.00. Balance as of 10-18-87, \$803.48. One unpaid bill of \$90.00 to the florist. Treasurers report approved as read. WD0FFX reported the bikeathon was a success well worth participating in. Eleven SARA members took part in providing communications. FFX also reported on the field trip of members of the current SARA license class to visit radio stores in the Bay Area. 12 adults and 2 small children made the trip. WG6P read quotes received on liability insurance for the club. One quote was at \$1100 and one at

..... See Page 12.....

----- CONTACT LENS ALERT -----

Two recent incidents have uncovered an important safety hazard with contact lenses. The first was an electrical worker who threw an uncovered electrical switch into a closed position that produced a short spark. The second involved a welder who flipped open his protective face shield to better position a welding rod. The rod contacted the metal and also produced a spark. Nothing was unusual except that both men were swearing contact lenses. On returning home, they each removed their contact lenses and the cornea of the eye was removed along with the lenses. The result was instant and total blindness in each man's affected eye.

.....See Page 7....

FIRST TRANS-ATLANTIC RADIO SIGNALS IN 1901

The first radio signal to span the Atlantic took place 86 years ago this month on December 12, 1901. A series of CW signals using the letter "S" were transmitted from England to Signal Hill, Newfoundland. Few people know that this remarkable feat was really scheduled for America. The American site for this event was scheduled to be South Wellfleet on Cape Cod, Massachusetts. The timbers for the huge wooden towers constructed to hold the antennas are still there, protected by the U.S. National Park Service in the Cape Cod National Seashore. Some are under water now since Cape Cod is slowly eroding away at the rate of three feet a year. Now that you know all this, can you name the person in England that actually made the first trans-Atlantic wireless transmission?? It was Guglielmo Marconi! After Heinrich Hertz demonstrated the existence of electric and magnetic waves, Marconi began dreaming of a way to send messages from transmitter to receivers without the aid of wires. In 1894 he was able to detect an electric wave 30 feet away. In 1895 that distance grew to one mile. Using

more powerful equipment it eventually grew to 200 miles. CW became the rage in Europe and then the USA. Marconi thought magnetic waves could leap the ocean but the great American electric inventor, Thomas A. Edison said it was impossible. The receiving site on Cape Cod was selected by Marconi as the westernmost tip of America for which he paid \$250 for eight acres of land which today is worth millions. It offered an unobstructed straight line path to Poldhu on the English coast where in 1901 Marconi constructed a powerful transmitting station. Both the England and USA sites were designed the same with a circular series of twenty 200-foot ship's masts planted in the sandy soil about 165 feet from the ocean. Disaster hit both sites when separate storms blew both antennas down. The England antenna was replaced with a "V" shaped aerial (as they were called in those days) strung between two salvaged 150-foot masts. The USA site was abandoned and move to St. John's, Newfoundland. It was prearranged that the three-dot (S) Morse-Code signal would be transmitted from

FIRST TRANS-ATLANTIC RADIO SIGNALS IN 1901

(Continued from previous page)

Poldhu, England starting on December 11, 1901. The following day, what Edison said couldn't be done had been accomplished. This feat eventually led to regular telegraphic transmissions across the Atlantic. European news was relayed to the New York times through the Cape Cod station and ocean-going vessel adopted Marconi's apparatus to receive news broadcasts. Business and social messages could be sent to Europe for fifty cents a word. CW operators operated at 17 WPM and the spark from there spark-gap transmitters could be heard by neighbors up to four miles away. The Cape Code station operated for 15 years before being forced to close because of erosion and threatened col-

lapse. It was subsequently replaced in 1920 by a new station in Chatham, Massachusetts. The QCWA (Quarter Century Wireless Association) has installed a replica in the National Park Service Headquarters building at South Wellfleet of the original spark gap transmitter which made the historic first two way trans-Atlantic radio contact. If you ever visit Massachusetts and Cape Cod, be sure to pay a visit one of the nations little know historical landmarks, really, the first Voice of America.

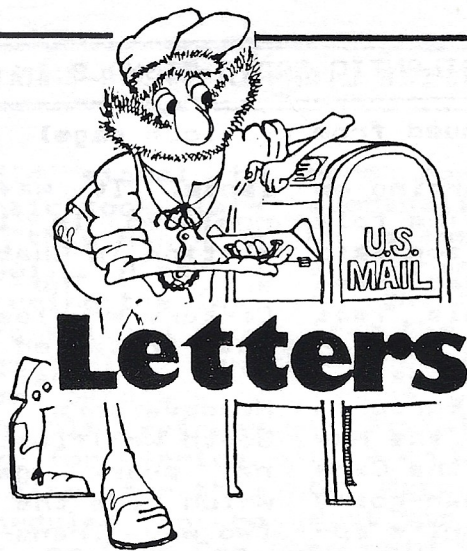
...Excerpted from News5YI Report and researched by Michael E. Whatley of the Cape Cod National Seashore.

CONTACT LENS ALERT

(From Page 5)

Later investigation showed that in both cases the electric arc generated microwaves that dried up the fluid between the eye tissue and the contact lens and bonded the cornea to the lens. Unfortunately, the trauma is painless, so the individual never knows that an injury has occurred until he tries to remove the contact lenses. When these incidents were reported, the phenomenon was unknown to federal safety and health agencies. In the interim, don't wear contacts if your are subject to electrical sparking!

.....de West Coast ARC, Westlink ad WorldRadio.



Disneyland

Bob Pinheiro, WA6ZLO
Editor, The READOUT
1221 Mist Flower Ct.
Modesto, Ca 95355

10-12-87

Dear Bob:

Last weekend I was at Disneyland with my family. Following up on a story in the June 1987 READOUT, I stopped by the Office inside the Main Entrance to find out about the Disneyland repeater (WA6BIZ).

To make a long story short, I got nowhere. First the nice lady just looked puzzled. When I insisted I knew what I was talking about, she phoned "here boss." That prompted the comment that she was not allowed to give out the frequency, and that no one was supposed to know about the repeater. I said I already knew frequency -- that was public information -- but had been told that access could be granted. She said I would have to talk to the Director of Communications -- on Monday.

I thanked her and went to the Registration and Information Office down Main Street. The nice lady there made a few phone calls and said she had no idea what I was talking about but that I could call her boss, the Director of Publicity -- on Monday. What did I do wrong? By the way, when I used the autopatch last month to phone my wife from the College Observatory in Columbia, and got a variety of dysfunctional results (busy signal, "didn't dial a 1") a helpful member assisted me to complete the patch. Many thanks to Danny in Ceres.

Yours truly,

/s/ Bill Luebke, KA6DJR

Dear Bob:

First, allow me to apologize to Bill and inconvenience. Unfortunate circumstance.

Please let me explain.

About a year ago, around the time appeared, without our knowledge, entitled "Going to Disneyland So" received the first of several letter experiences similar to Bill's. After discovered that several clubs as well published this same article.

Sadly, the only accurate part of the repeater is located at Disneyland.

We have been unable to locate the site. I can assure you that this article is a concern.

In order to help clear this up, I am providing repeater specifications and operating instructions free to pass these on to your readers. We hope that on their next visit they will be able to use our repeater.

73's

Brad S. Russo

Brad S. Russo KB6GPM

President, Disneyland Amateur Radio

REPEATER INFORMATION

The Disneyland Amateur Radio Club Repeater is a split site system, with the receiver located on top of the Matterhorn and the transmitter located behind It's A Small World.

The Repeater is open 24 hours a day and is usually carrier operated. However, due to occasional co-channel interference a P.L. tone of 1-2 may be required.

Input Frequency 146.340 mhz

October 22, 1987

Output Frequency 146.940 mhz

Offset - 600 khz

P.L. Tone 1-2/100 hz

IN-PARK OPERATING PROCEDURE

Please feel free to use your portable 2m rig in our park; however, we ask that you observe the following guidelines:

1. For obvious reasons, please refrain from using telescopic antennas in the park. "Rubber Duck" type antennas are less cumbersome and are much safer to use around people.
2. When trying to make contact with other Amateurs in your party, please use a simplex frequency whenever possible so others may use the Repeater.
3. Should you need to report a lost child or are in need of any assistance, please don't rely on your amateur radio. Just ask any one of our hosts or hostesses for assistance.
4. Please be considerate. Our guests come to Disneyland to enjoy the Magic Kingdom. Please do not distract from their special day by calling undue attention to yourself and your radio.

We hope you enjoy your day with us at Disneyland.

If you would like any further information, please send a card or letter to:

Disneyland Amateur Radio Club
c/o Cast Activities Center
P.O. Box 3232
Anaheim, CA 92803

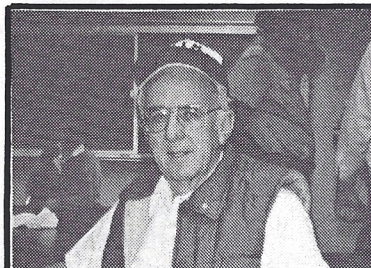
VEC TESTING HALTED IN PUERTO RICO

In an unprecedented action, the FCC has notified all Volunteer Examiner Coordinator (VEC's) with amateur radio operator testing teams in the Caribbean that it no longer will accept the services of any accredited volunteer examiner in VEC testing Region 12 because of widespread irregularities in the volunteer examiner system in Puerto Rico. The action was taken in accordance with Part 515(b) of the rules which permits the government to decline the service of volunteer examiners certified by a VEC. Citing unusually high pass rates the Commission was very concerned about volunteer amateur radio operator testing in Puerto Rico. While the total number of individual US amateur operators has increased less than 3-1/2% since January 1986, the Puerto Rican amateur census during this same period is up nearly 50%. Amid unsubstantiated rumors of "irregularities", the VEC status of the region 12 MAR-S-VEC, headed up by Jose E. Saldana, KP4JM, was revoked by the FCC for failure to properly handle required VEC paperwork. The FCC has active ongoing investigations concerning suspected fraudulently held VEC system test sessions in Puerto Rico. These investigations involve both ARRL and W5YI coordinated sessions. The Extra Class volunteer examiners could face license revocation proceedings. There are several involved. ...de New5YI...

Page 10

MEXICO INTERFERENCE

Increasing Mexico / United States border radio interference is seriously affecting the US public safety, broadcast, government and military radio services. The problem exists primarily due to the lack of a treaty between the United States and Mexico concerning border frequency assignments. While US and Canadian officials work closely to eliminate co-channel border interference, such cooperation does not exist with Mexico. The problem is particularly severe in Southern California.



Meet "Gentleman
Jim Smith."
KB6DJ.....KB6-
Disc Jockey

PACKET RADIO BANDPLAN RECOMMENDATIONS

The Northern Amateur Relay Council of California, NARCC, has issued bandplan recommendations for Packet Radio. NARCC is the recognized frequency coordinating committee for Northern California. These are only recommendations at this time.

Frequency	Recommendation	Comments
144.910 MHz	Keyboard	No BBS
.930	BBS user input	
.970	BBS user input	
.990	BBS user input	
145.010	Keyboard	No BBS
.030	Keyboard	No BBS
.050	Keyboard	No BBS
.070	BBS user input	
.090	BBS user input	
220.950	Wideband Packet	
223.560	Keyboard	No BBS
223.580	BBS/Network Forwarding	
441.500	Low Level Usage	

VE Test
Sponsored by



Contact Person
KI6YQ 537-2785

Walkin's OK

County Center 3

))) DECEMBER 3, 1987 (((
(Thursday Night)

630 pm.....20 WPM Code
700 pm.....13 WPM Code
730 pm.....5 WPM Code
800 pm.....Written Tests

))) DECEMBER 5, 1987 (((
(Saturday)

900 am.....20 WPM Code
930 am.....13 WPM Code
10 am.....5 WPM Code
1030 am.....Written Tests

Modesto

COOKIES PLEASE!

Some Christmas cheer is planned for the December 15th meeting of SARA. Ladies attending are asked to bring cookies and the club will provide the refreshments. Questions? Contact Dottie, 537-2785.

ON THE AGENDA

(From Page 5)

October 20, 1987 Meeting

\$600. The latter was the only realistic quote we received. Our bank account is not substantial enough to cover this amount and still support ourselves for the rest of the year according to W66P. KB6GYM reported there will be another CW contest in the Novice portions of the bands during the month of November, 1987. Points will be given as per QSL cards or logs submitted to GYM. KB6DXX, Lynn, reported for the committee on repeater rules. Recommended by the committee for adoption were items 1 through 7 and 10 and 13 as proposed by the committee. Moved, seconded and approved. A lengthy discussion followed on whether to change the rules regarding the linking of the 220 and 2 meter repeaters. The majority voted to keep the rules as is. See the October, 1987 READOUT for the full list of rules.

Break at 915 pm for refreshments. John, KG6OU, asked about printing of the Bylaws to be included with the READOUT for all members. Phil advised that it would be in the READOUT in November or December at the latest. KB6DIV presented a most interesting and challenging story on Cruising the Sea of Cortez. A nominating committee was selected to come up with nominations for a slate of officers for 1988. Respectfully submitted by SARA Secretary, LaVerne, KB6ECF.

IVAN, W6SKH SUFFERS HEART ATTACK

SARA member, Ivan Lowe, W6SKH, suffered a heart attack on November 4th, 1987 at his Turlock area home. According to his wife, Marge, KB6DXM, Ivan suffered the attack around 630 am and was taken to the hospital by ambulance. Doctors used the balloon technique and opened the one artery that was clogged. The procedure was so successful Ivan was allowed to go home shortly after arrival. Good luck Ivan!

W6DPD REPORT

Because of the early press date this month, the Section Communications Managers report will not appear this month. The SCM Report will be back next month.

FCC DIGESTING THOUSANDS OF COMMENTS REGARDING 220 BAND

The Commission is now in the process of reading and digesting the many thousands of comments it received concerning 87-14, the FCC proposal to remove the bottom 2 MHz of the 220 band from the amateur service.


The ARRL continues to work with specialists in the field of congressional relations to identify and make use of every likely source of support on Capitol Hill, and many interested members continue to write or meet with their representatives explaining the amateur position.

Due to the sheer volume of comments, as well as the oncoming holiday season, FCC action on 87-14 is not expected until January or February at the earliest. This Docket could also be further delayed by Commissioner vacancies on the FCC. In 1985, the FCC proposed reallocating to the Land Mobile Radio Services several unassigned UHF television channels in Docket 85-172.

Recently, the Commission decided to temporarily refrain from any action in this Docket. What is of interest to amateurs in the fight to retain 220-222 MHz is the concurring statement by Commissioner James Quello. He states: "I would agree to the expedited time table adopted in this proceeding if I were convinced that there was an urgent need for Land Mobile sharing at this time. However, as I have stated on numerous occasions, the Land Mobile community has failed to demonstrate a need for additional spectrum.

Indeed the Commission is currently evaluating comments on its own internal studies which cast doubt on the need for additional sharing. In my opinion, the issue of "need", in and of itself, justifies a cautious approach to further Land Mobile sharing."

.....de ARRL Newsletter



Editor's WA6ZLO Notes

Some of you may get this issue (December) early because we are mailing early this month to avoid delays caused by the Christmas mail crunch. +++ Dues for 1988 are due and payable officially on 1-1-88. For the first time since the club was founded in 1976, members voted to increase the dues effective 1-1-88. The new rate is \$20.00 for full membership; \$10.00 for students up to a sophomore in college. The family rate has been changed as follows. \$20.00 for the head of the household; \$10.00 each for next two members living in the same household. Any additional members of the same household are free. The maximum that can be charged for a family of Amateurs living in the same household is \$40.00. As of this time, the Duncan family of Ceres is the only family affected by this

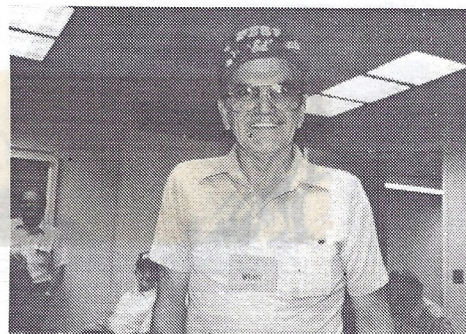
rate with five licensed Amateurs in the family. Please take time to fill out the renewal form in this issue and return it to the club's post office box as soon as you can. Also, please take time to fill out the short questionnaire on the backside of the renewal form which will help me in planning future issues of The READOUT. Please don't forget to fill out the renewal form as we need the most current information for our data base. +++Congratulations to SARA member Paul Caruso, WD6EYX, of Ceres who was elected to the Ceres City Council in November. Paul is a former President of SARA. +++ A new Packet voice net is being conducted on 145.17 MHz (Fowler Peak) repeater on Wednesday nights at 8 pm. All Packet aficionados are welcome to listen in and participate in the exchange of information. The latest SARA member to join the ranks of packeteers is Don, N6GGB, in Tracy. As some of you know, I upgraded my computer system to an IBM Clone in August. It was like going from a VW to a Cadillac and the crush of new things to learn was pronounced. Thanks to Don, N6GGB and Tim, WB6UJD, I got off to a smooth start. Don wrote a data management file for me with which I keep the club's roster and mailing labels. He continues to offer me great assistance in this field for

which I'm extremely great-
 full. Tim set up the new sys-
 tem for me and was a great
 help in getting me started.
 Without their help it would
 have been very difficult.
 THANK YOU BOTH!! +++ I got a
 nice card in the mail from
 Dick, N6MDK, in Roseburg, Or.
 He's doing fine and asked me
 to pass along his regards to
 all SARA members. +++Thanks
 to Bill Luebke for his letter
 regarding the Disneyland Re-
 peater. See pages 8 & 9 for
 the answer to his question.
 +++ Got a note (via packet)
 from Doug, WB6MFV, who gave
 me a couple of corrections
 for the 220 MHz list I pub-
 lished last month. The 224-
 .52 repeater in Livermore has
 changed frequency and call.
 The call is now WB6MFV/R and
 the new frequency is 224.74.
 The San Jose repeater former-
 ly on 224.74 MHz is no more.
 +++ Next time you hear Tom,
 N6LSF, on the air you might
 give him a shout. Especially
 if it's on the low bands.
 Tom, a veteran pilot for Uni-
 ted Airlines, has been flying
 the Hawaiian Islands route
 from San Francisco and when
 time permits (while the auto-
 pilot is on) he's been firing
 up the onboard lowband radio
 and talking to the mainland.
 Keep an ear peeled on 2 me-
 ters and find out when he
 plans to get on with his 35,-
 000 foot antenna. Wow, what
 a signal! +++ As this year
 comes to a close I want to

thank all of you who have in
 one way or another help in
 the publishing of The READ-
 OUT. Many of you have taken
 time to write or submit
 articles, cartoons, etc.
 Your contributions are great-
 ly appreciated and have made
 our newsletter one of the
 better newsletters around.
 I hope you will continue to
 help. That's it for this
 month. Have a very Merry
 Christmas and a prosperous
 New Year. 73, Bob, WA6ZLO.



"Com'on Dan, (WA6KDC)
 put on a happy face for
 the folks!"



"Here, Ed, WB6V, will
 show you how!"



CALENDAR



Dec.	3,	1987.....	SARA VE Test (Night Session) County Center 3 Modesto	630 pm
Dec.	5,	1987.....	SARA VE Test Co. Ctr. 3...	900 am
Dec.	15,	1987.....	SARA Monthly Meeting..... Election of 1988 officers.	730 pm
Jan.	19,	1988.....	SARA Monthly Meeting.....	730 pm
Feb.	16,	1988.....	SARA Monthly Meeting.....	730 pm
Mar.	15,	1988.....	SARA Monthly Meeting.....	730 pm
Apr.	19,	1988.....	SARA Monthly Meeting.....	730 pm
May.	17,	1988.....	SARA Monthly Meeting.....	730 pm
June	21,	1988.....	SARA Monthly Meeting	730 pm
July	19,	1988.....	SARA Monthly Meeting.....	730 pm
Aug.	16,	1988.....	SARA Monthly Meeting.....	730 pm
Sept.	20,	1988.....	SARA Monthly Meeting.....	730 pm
Oct.	18,	1988.....	SARA Monthly Meeting.....	730 pm
Nov.	15,	1988.....	SARA Monthly Meeting.....	730 pm

ADDRESS CORRECTION REQUESTED
RETURN POSTAGE GUARANTEED

Bulk Rate
US POSTAGE
PAID
Permit No. 5
Modesto, Calif.

Stanislaus Amateur Radio Association, Inc.
P.O. Box 4601 Modesto, Ca 95352